

## **BOROUGH OF TRAFFORD (PROHIBITION OF WAITING AND LOADING AND PROVISION OF PARKING) ORDER 2001 (AMENDMENT NO 213) ORDER 201?**

**NOTICE IS HEREBY GIVEN** that Trafford Borough Council proposes to make an Order under the Road Traffic Regulation Act 1984.

The effect of the Order will be to amend the Borough of Trafford (Prohibition of Waiting and Loading and Provision of Parking) Order 2001, as amended, ("the 2001 Order") by the introduction or removal of the following provisions:

- a) No waiting at any time Code – 7A

on the lengths of roads specified in Schedule 1 hereto, by the addition, to the Schedule to the 2001 Order, of the lengths of road specified in Schedule 1 below.

### **Schedule**

<b>Street</b>	<b>Side</b>	<b>From</b>	<b>To</b>	<b>Code</b>
Erskine Street, Old Trafford	Southwest	Its junction Stretford Road	A point 6 metres southeast of its junction with Stretford Road	7A
Lucy Street, Old Trafford	Northeast	Its junction Stretford Road	A point 16 metres northwest of its junction with Stretford Road	7A
Lucy Street, Old Trafford	Southwest	Its junction Stretford Road	A point 7 metres northwest of its junction with Stretford Road	7A
Stretford Road, Old Trafford	North	Its junction with Lucy Street	Its junction with Erskine Street	7A
Stretford Road, Old Trafford	South	A point 24 metres southwest of its junction with Erskine Street	Its junction with Erskine Street	7A

A copy of the Draft Order, together with a statement of reasons may be inspected at Stretford Library Information Desk during the normal opening hours. The Notice and plans can also be viewed on-line at: [www.trafford.gov.uk/trafficregulationorders](http://www.trafford.gov.uk/trafficregulationorders)

Any objections to the proposals, together with the grounds on which they are made, should be sent, in writing, to the address below or by e-mail to [traffordtraffic@amey.co.uk](mailto:traffordtraffic@amey.co.uk) by 1<sup>st</sup> November 2018.

Dated: 11<sup>th</sup> October 2018  
One Trafford/Trafford Council,  
Traffic Section,  
Tatton House,  
Caldey Road,  
Manchester,  
M23 9LF

### **Abbreviated for papers**

## **BOROUGH OF TRAFFORD (PROHIBITION OF WAITING AND LOADING AND PROVISION OF PARKING) ORDER 2001 (AMENDMENT NO 213) ORDER 201?**

**NOTICE IS HEREBY GIVEN** that Trafford Borough Council proposes to make an Order under the Road Traffic Regulation Act 1984.

The effect of the Order will be to amend the Borough of Trafford (Prohibition of Waiting and Loading and Provision of Parking) Order 2001, as amended, ("the 2001 Order") by the introduction of waiting restrictions on lengths of Erskine Street, Lucy Street and Stretford Road, Old Trafford.

A copy of the Draft Order, together with a statement of reasons may be inspected at Stretford Library Information Desk during the normal opening hours. The Notice and plans can also be viewed on-line at: [www.trafford.gov.uk/trafficregulationorders](http://www.trafford.gov.uk/trafficregulationorders)

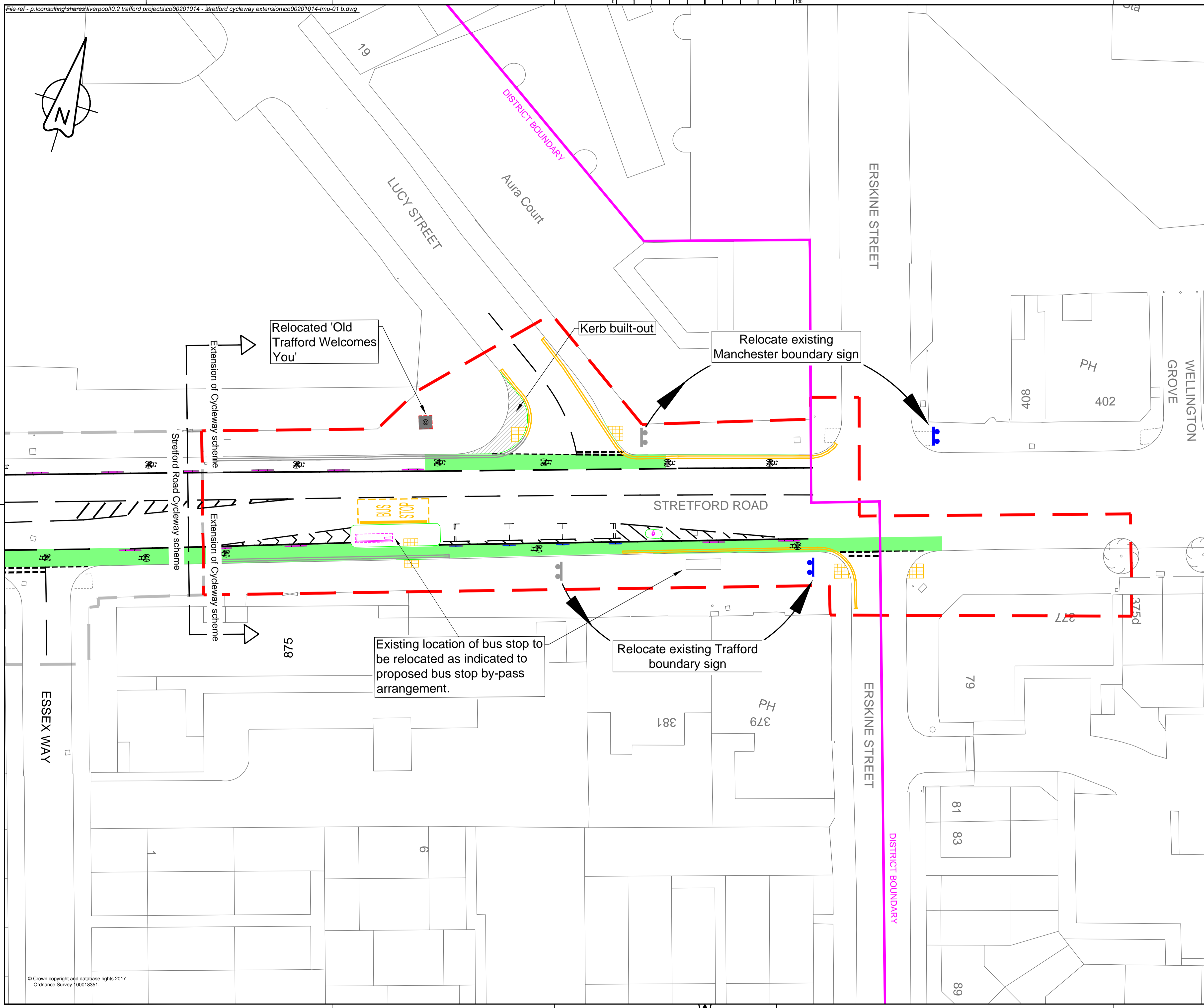
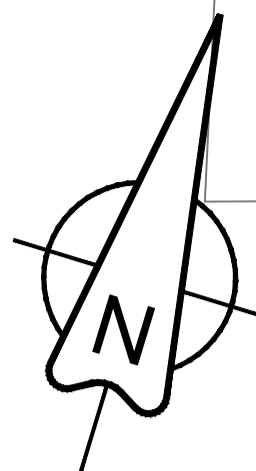
Any objections to the proposals, together with the grounds on which they are made, should be sent, in writing, to the address below or by e-mail to [traffordtraffic@amey.co.uk](mailto:traffordtraffic@amey.co.uk) by 1<sup>st</sup> November 2018.

Dated: 11<sup>th</sup> October 2018  
One Trafford/Trafford Council, Traffic Section, Tatton House, Caldey Road, Manchester, M23 9LF

## **STATEMENT OF REASONS**

Proposals to introduce waiting restrictions as part of the Stretford Road and Talbot Road cycleway scheme were advertised in August 2017.

As the scheme design progressed, it was discovered that what was previously thought of as being the borough boundary (the limits of the scheme) was incorrectly signposted on street. Subsequently, there is now a need to introduce approximately 50 metres of additional cycleway and therefore an associated Traffic Regulation Order is required to be implemented.



**RESIDUAL DESIGN HAZARDS**  
 (The following information has been collected from Preconstruction Information and the Arney CDM Hazard Management Process.)

The designers draw the readers attention to key residual Construction Health and Safety Hazards that have not been eliminated from the designs shown on the drawings by the design process. These hazards are identified below:

1. Live traffic adjacent to site.
2. Work at height. Objects must be prevented from falling onto adjacent land / highway.
3. A copy of all received Statutory Undertakers drawings are included in the package of works for information. All services must be verified by the Contractor through liaison with the various undertakers and by using detection equipment prior to any excavations taking place.
4. Working in proximity of bridge structure
5. Unknown 3 Inspection Chambers

**ENVIRONMENTAL HAZARDS**  
 (The following information has been collected from Preconstruction Information and Arney Process ENV1-EnvAssess-FR-01- Environmental Assessment - Planning & Design.)

1. Works to be carried out outside bird nesting season, which is between March & August (Inclusive).
2. Any invasive / injurious plants must be handled, stored and disposed of in accordance with relevant legislation.
3. If any protected species are encountered, works should cease immediately and the environmental team notified.
4. Noise from plant and machinery to be kept to a minimum due to being in a residential area

**KEY**

- Safetrack Green coloured surfacing
- Redweld Greenwich Wand Orca 2500mm long x 175mm wide with two 800mm high x 80mm diameter rebound pole cones (wands)
- Redweld Greenwich Wand Orca 1500mm long x 175mm wide with one 800mm high x 80mm diameter rebound pole cone (wand)
- Proposed Double Yellow Lines - No Waiting At Any Time
- Existing/Previously Advertised Double Yellow Lines - No Waiting At Any Time
- Manchester/Trafford boundary sign

B	Erskine Street TRO revised	SNP	SS	02/10/18
A	Trafford/Manchester boundary signs to be relocated added	SNP	SS	13/09/18
Rev	Revision details	Chkd	Appd	Date
Designed: DE		Date: Feb 18		
Drawn: DE		Date: Feb 18		
Checked: MF		Date: Feb 18		
Approved: GR		Date: Feb 18		

Copyright © Arney

**ameyconsulting**  
www.amey.co.uk

Client

**ONE TRAFFORD**

Project Name  
**Stretford Cycleway Extension**

Drawing Title  
**Consultation**

Original Drawing Size : A1	Scale : 1:200
Dimensions : M	
Drawing Status <b>TMU REPORT</b>	Suitability I
Drawing No <b>CO00201014-TMU-01</b>	Rev <b>B</b>