

**BOROUGH OF TRAFFORD (PROHIBITION OF WAITING AND LOADING AND PROVISION OF PARKING) ORDER 2001 (AMENDMENT NO 173)(PART A) ORDER 2015**

**NOTICE IS HEREBY GIVEN** that Trafford Borough Council has made an Order under the Road Traffic Regulation Act 1984.

The effect of the Order will be to amend the Borough of Trafford (Prohibition of Waiting and Loading and Provision of Parking) Order 2001, as amended, ("the 2001 Order") by the introduction or removal of the following provisions:

- |    |  |                |
|----|--|----------------|
| a) | No Waiting at Any Time   | Code - 7A      |
| b) | Waiting Limited to 2 hours no return within 2 hours, Mon – Fri 9am – 5pm | Code - LM5E    |
| c) | 'Past this Point' Permit U Holder parking Monday – Friday 9am – 5pm      | Code - PP5ERPU |

on the lengths of roads specified in Schedules 1 and 2 hereto by the addition, to the Schedule to the 2001 Order, of the length of road specified in Schedule 1 below and by the removal, from the Schedule to the 2001 Order, of the length of road specified in Schedule 2 below.

**SCHEDULE 1 – Proposed**

Street	Side	From	To	Code
Simons Close, Sale		Its entirety		PP5E RPU
St David's Close, Sale	North east	Its junction with St James Drive	A point 3 metres south east of its junction with St James Drive	7A
St David's Close, Sale	South west	Its junction with St James Drive	A point 2 metres south east of its junction with St James Drive	7A
St David's Close, Sale		From a point approximately 2 metres south east of its junction with St James Drive to and including its cul-de-sac end		PP5E RPU
St James Drive, Sale	North west	Its junction with Marsland Road	A point 23 metres north east of its junction with Marsland Road	7A
St James Drive, Sale	North west	A point 23 metres north east of its junction with Marsland Road	A point 33 metres north east of its junction with Marsland Road	LM5E
St James Drive, Sale	North west	A point 33 metres north east of its junction with Marsland Road	A point 42 metres north east of its junction with Marsland Road	7A
St James Drive, Sale	South east	Its junction with Marsland Road	Its junction with St David's Close	7A
St James Drive, Sale	South east	Its junction with St David's Close	A point 6 metres north east of its junction with St David's Close	7A
St James Drive, Sale		From a point approximately 6 metres north east of its junction with St David's Close to and including its cul-de-sac end		PP5E RPU

**SCHEDULE 2- revoked**

Street	Side	From	To	Code
St James Drive, Sale	Both	Its junction with Marsland Road	A point 25 metres north east of its junction with Marsland Road	7A

The proposals for Church Brow, Bowdon and Burlington Road, Altrincham which were advertised at the same time as the above will be the subject of a future part order or abandoned.

The Order will come into operation on 16<sup>th</sup> November 2015, and a copy, together with a map showing the lengths of road to which it relates may be inspected at Access Trafford, Sale Waterside, Sale during the normal opening hours and online at: [www.trafford.gov.uk/trafficregulationorders](http://www.trafford.gov.uk/trafficregulationorders)

If you wish to question the validity of the Order or any provision contained in it on the grounds that it is not within the powers contained in the Road Traffic Regulation Act 1984, or that any requirement of that Act or of any instrument made under it has not been complied with in relation to the Order you may, within six weeks from 15<sup>th</sup> October 2015 apply to the High Court for that purpose.

Dated: 15<sup>th</sup> October 2015

Contracts Director, Trafford Council, Waterside House, Sale, M33 7ZF

**Abbreviated for papers**

**BOROUGH OF TRAFFORD (PROHIBITION OF WAITING AND LOADING AND PROVISION OF PARKING) ORDER 2001 (AMENDMENT NO 173)(PART A) ORDER 2015**

**NOTICE IS HEREBY GIVEN** that Trafford Borough Council has made an Order under the Road Traffic Regulation Act 1984.

The effect of the Order will be to amend the Borough of Trafford (Prohibition of Waiting and Loading and Provision of Parking) Order 2001, as amended, ("the 2001 Order") by the introduction or removal of waiting restrictions on lengths of **Simons Close, St David's Close and St James Drive, Sale.**

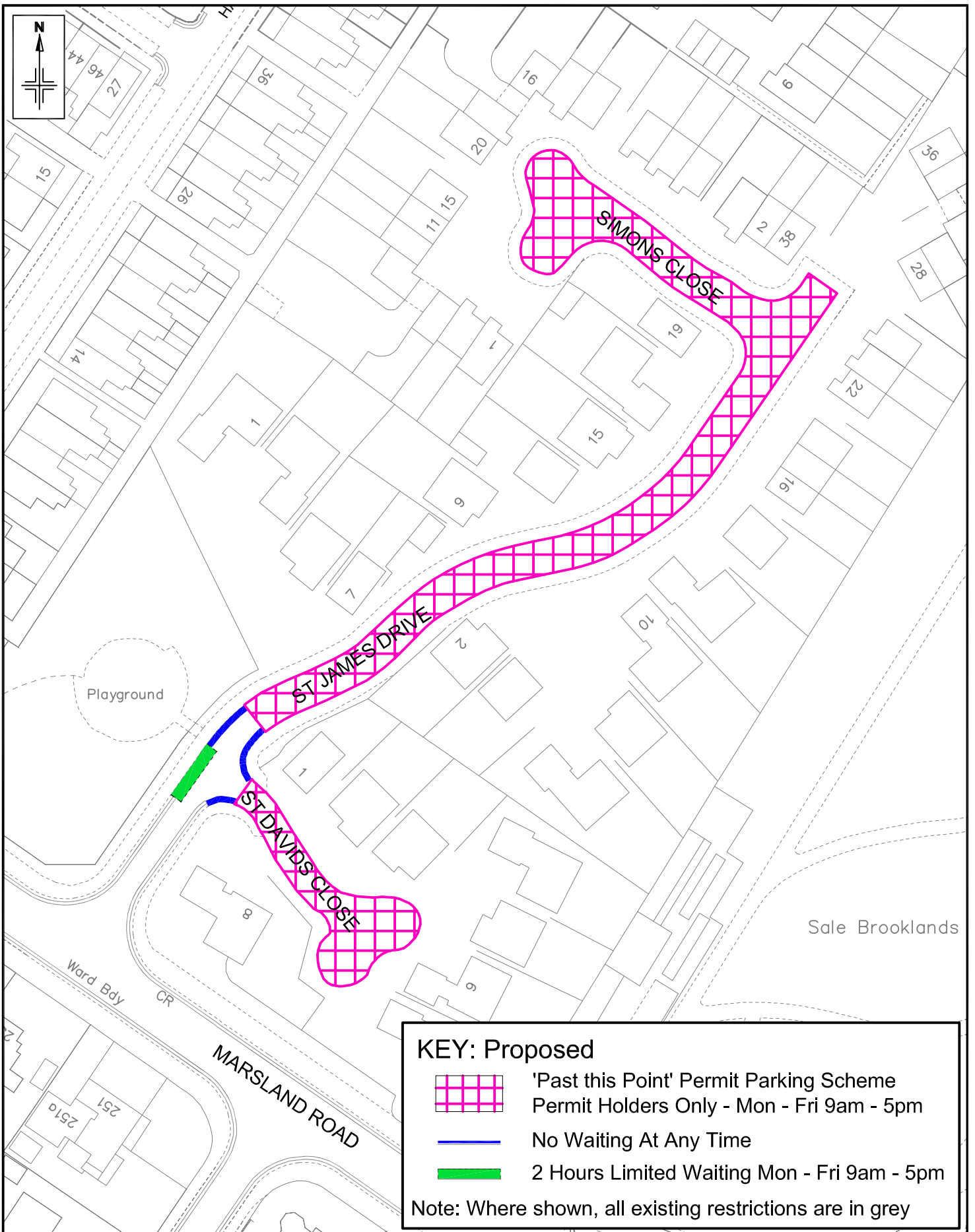
The proposals for Church Brow, Bowdon and Burlington Road, Altrincham which were advertised at the same time as the above will be the subject of a future part order or abandoned.

The Order will come into operation on 16<sup>th</sup> November 2015, and a copy, together with a map showing the lengths of road to which it relates may be inspected at Access Trafford, Sale Waterside, Sale during the normal opening hours and online at: [www.trafford.gov.uk/trafficregulationorders](http://www.trafford.gov.uk/trafficregulationorders)

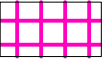


If you wish to question the validity of the Order or any provision contained in it on the grounds that it is not within the powers contained in the Road Traffic Regulation Act 1984, or that any requirement of that Act or of any instrument made under it has not been complied with in relation to the Order you may, within six weeks from 15<sup>th</sup> October 2015 apply to the High Court for that purpose.

Dated: 15<sup>th</sup> October 2015

Contracts Director, Trafford Council, Waterside House, Sale, M33 7ZF



**KEY: Proposed**

-  'Past this Point' Permit Parking Scheme  
Permit Holders Only - Mon - Fri 9am - 5pm
-  No Waiting At Any Time
-  2 Hours Limited Waiting Mon - Fri 9am - 5pm

Note: Where shown, all existing restrictions are in grey

Reproduced from the Ordnance Survey mapping with the permission of the Controller of Her Majesty's Stationery Office © Crown copyright. Unauthorised reproduction infringes Crown copyright and may lead to prosecution or civil proceedings. Trafford Borough Council OS Licence No. LA076392 1999		Notes: No Dimensions to be scaled from this drawing. All Dimensions are to be checked on site.		REV.	DATE	REVISION DETAILS	DRAWN	CHECKED	APPROVED
<b>PROJECT &amp; TITLE</b> Barker's Lane Residents Permit Parking and limited Waiting Scheme Extension: St. James Drive Area - Option A				DRAWN SG	CHECKED AG	APPROVED AG			
				SCALE N.T.S	DRAWING NO. E8942/01		REVISION -		
				DATE Feb'15					
				FILE PATH <small>F:\Projects\398-216 Barker's Lane Phase 2\Traffic &amp; Transport\Drawings\Current Working DWG</small>					