

WHERE THE MONEY GOES



£63.08 Million  
Children's and  
Education  
Services



£2.51 Million  
Economic Growth,  
Planning and  
Environment



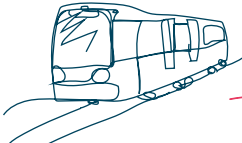
£22.25  
Million Cost  
of Supporting  
Council Services



£78.21 Million  
Adults Social  
Services (inc  
Public Health)



£17.85 Million  
Collecting and  
Getting Rid of  
Waste



£25.54 Million  
Highways, Roads  
and Transport  
Services

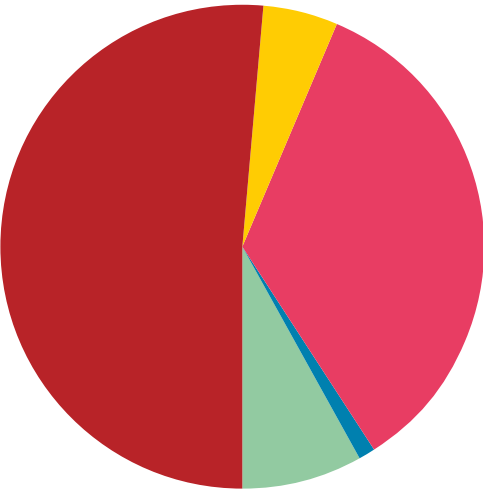


£17.33 Million  
Central Costs  
including Capital  
Financing and net  
cost of Housing  
Benefit



£5.12 Million  
Recreation and  
Tourism

TRAFFORD COUNCIL'S FUNDING BY SOURCE  
2025/26



**Council Tax Core Precept,**  
£117.82m, 51%

**Reserves & Capitalisation  
Direction,** £12.20m, 5%

**Business Rates,** £79.76m, 35%

**Council Tax Surplus from Prior  
Year,** £0.78m, 1%

**Council Tax Adult Social Care  
Precept,** £21.33m, 8%

**Total Budget** £231.89m

ADULT SOCIAL CARE PRECEPT

The Secretary of State made an offer to adult social care authorities. ('Adult social care authorities' are local authorities which have functions under Part 1 of the Care Act 2014, namely county councils in England, district councils for an area in England for which there is no county council, London borough councils, the Common Council of the City of London and the Council of the Isles of Scilly.) The offer was the option of an adult social care authority being able to charge an additional 'precept' on its council tax without holding a referendum, to assist the authority in meeting its expenditure on adult social care from the financial year 2016/17.

It was originally made in respect of the financial years up to and including 2019/20. If the Secretary of State chooses to renew this offer in respect of a particular financial year, this is subject to the approval of the House of Commons. The 2% Adult Social Care Precept has been levied for 2025/26.



TRAFFORD  
YOUR COUNCIL TAX





WELCOME

This is my third budget as Leader of the Council.

My plan remains; to develop our vision, ambitions and priorities while delivering a better and brighter future for Trafford. I know nobody likes receiving their council tax bill, especially in the current economic climate, but it is essential for funding local services.

Each year, the cost of the services we deliver rises at a significantly faster rate than our income, making managing the budget extremely difficult. In 2025/26 Trafford needed to address a budget gap of £28.6m, on top of already bridging budget gaps of £306m since 2010. The problem is compounded as Trafford is the lowest-funded metropolitan district in Greater Manchester and our council tax rate in 2024/25 for a band D property is amongst the lowest of similar authorities (£1,602 compared to an average of £1,760).

In the face of this tough financial challenge, we have taken the considered and responsible decision to ask the government for help, known as Exceptional Financial Support (EFS). Our request was agreed, resulting in a bespoke referendum principle, meaning we can increase council tax by 7.49% for 2025/26.

I understand the financial pressures many Trafford residents are facing. We have not made the decision to seek to increase council tax lightly, but we have no option if we are to get on a firmer financial footing.

We will do all we can to support those facing financial hardship and encourage those who need it to access the Council's Council Tax Support Scheme (one of the most generous in Greater Manchester), Trafford Assist and Household Support Fund for debt and welfare rights advice.

Please know we are not alone in asking for EFS. A significant number of local authorities have made similar applications. Rest assured, we will continue to generate alternative funding and income streams, including the regeneration of Stretford Mall, Stamford Quarter in Altrincham and Lumina Village in Old Trafford, which are real opportunities for the future.

Despite the challenges, this budget includes £10.4m investment in our social care services; safeguarding vulnerable children, young people and adults and supporting a sustainable care market. The capital programme includes nearly £16m to be spent on highways, improving our roads and prioritising pothole repairs, £42m to modernise leisure and sports facilities, £11m on home adaptations for disabled people and £6m on parks and green spaces.

I will continue to lobby government for sufficient resources to meet the increasing need for our services.

Thanks for taking the time to read this leaflet.



Councillor Tom Ross  
Leader of Trafford Council

YEARLY COUNCIL TAX CHARGE FOR TRAFFORD

The amount you must pay depends on which band your home is in. This is shown on your council tax bill. A government body called The Valuation Office Agency decides which band your property is in. Taxpayers in parish areas will pay extra because of the addition of a local parish precept.


BAND	COUNCIL TAX £ (EXCLUDING PARISHES)	PARTINGTON £	WARBURTON £	CARRINGTON £
A	1,413.88	1,457.25	1,447.21	1,433.88
B	1,649.53	1,700.12	1,688.42	1,672.86
C	1,885.16	1,942.98	1,929.60	1,911.83
D	2,120.84	2,185.89	2,170.84	2,150.84
E	2,592.13	2,671.64	2,653.24	2,628.80
F	3,063.42	3,157.38	3,135.64	3,106.75
G	3,534.72	3,643.14	3,618.05	3,584.72
H	4,241.68	4,371.78	4,341.68	4,301.68

For further information on how bands are set and how you can appeal against your band, contact [www.gov.uk/contact-voa](http://www.gov.uk/contact-voa)


The charge for council tax is calculated as follows

Most of the money we collect is spent on local council services. However, some of it pays for things that benefit the whole of Greater Manchester, such as police and fire services, and getting rid of waste. All councils in Greater Manchester make a similar contribution. Your bill shows how these costs are made up.


Example of breakdown for council tax band D:




**£1,457.72**  
Council Tax set by Trafford Council excluding the Adult Social Care Precept




**£263.87**  
Adult Social Care Precept



**£270.30**  
Mayoral Police and Crime Commissioner



**£128.95**  
Mayoral General (including Fire Service)



**£2,120.84**  
Band D (Amount residents in band D will pay)

EXTRA HELP

If you are struggling with your finances, there are a number of different ways we may be able to support you. [www.trafforddirectory.co.uk/moneymatters](http://www.trafforddirectory.co.uk/moneymatters) has information on how you can access help with debts, benefits advice and much more.

Help with council tax

- If you're struggling to pay your council tax, contact us. We can find a solution together. We could:
- Change your 10-month payment plan to a 12-month payment plan by completing [www.trafford.gov.uk/directdebit](http://www.trafford.gov.uk/directdebit)
  - Check if you're due a discount or exemption [www.trafford.gov.uk/reducemybill](http://www.trafford.gov.uk/reducemybill)
  - Check if you're entitled to council tax support [www.trafford.gov.uk/CTSInfo](http://www.trafford.gov.uk/CTSInfo)
  - Tell you how you can appeal if you think your council tax bill is wrong, for example you are not the resident or owner. See [www.valuationtribunal.gov.uk](http://www.valuationtribunal.gov.uk) for more information.
  - Tell you where you can get independent advice and support on budgeting and debt matters.

More information

Your guide to council tax, how it is calculated and spent can be accessed online. Visit [www.trafford.gov.uk/formsandleaflets](http://www.trafford.gov.uk/formsandleaflets)

View your council tax information online

Did you know you can now view your personal council tax information through a secure password protected account? Your online account allows you to view your council tax bill, dates your payments become due, as well as details of any reductions. To set up your account visit [www.trafford.gov.uk/traffordonline](http://www.trafford.gov.uk/traffordonline)

Sign up to direct debit

It's the easiest way to pay. The scheme offers you complete peace of mind as it is guaranteed by your bank. Visit [www.trafford.gov.uk/directdebit](http://www.trafford.gov.uk/directdebit)

Help with rent

If you get help with your rent from housing benefit or through Universal Credit, you may be eligible for a discretionary housing payment to help you if you are struggling to pay your rent. Visit [www.trafford.gov.uk/dischp](http://www.trafford.gov.uk/dischp)

Help with food and fuel

Trafford Assist is our emergency assistance scheme to help residents with food and fuel. You can apply online and get an instant decision. Visit [www.trafford.gov.uk/traffordassist](http://www.trafford.gov.uk/traffordassist)

